

NEUBERGER | BERMAN

NB Private Equity Partners Limited

Responsible and Sustainable Investment Statement

Financial Information as of 31 July 2020, unless otherwise noted

August 2020

THIS PRESENTATION CONTAINS FORWARD LOOKING STATEMENTS

THIS PRESENTATION HAS BEEN CREATED WITH THE BEST AVAILABLE INFORMATION AT THIS TIME. INFORMATION FLOW IN THE PRIVATE EQUITY ASSET CLASS OFTEN LAGS FOR SEVERAL MONTHS. THE PRESENTATION CONTAINS A LARGE AMOUNT OF FORWARD LOOKING STATEMENTS, PROJECTIONS AND PRO FORMA INFORMATION BASED UPON THAT AVAILABLE INFORMATION. THERE CAN BE NO ASSURANCE THAT THOSE STATEMENTS, PROJECTIONS AND PRO FORMA NUMBERS WILL BE CORRECT; ALL OF THEM ARE SUBJECT TO CHANGE AS THE UNDERLYING INFORMATION DEVELOPS.

THE INFORMATION IN THIS PRESENTATION IS BASED ON THE 31 JULY 2020 MONTHLY ESTIMATE; 24% OF THE PRIVATE EQUITY FAIR VALUE IS BASED ON 31 MARCH 2020 PRIVATE VALUATION INFORMATION, 61% IS BASED ON 30 JUNE 2020 VALUATION INFORMATION AND 8% IS BASED ON PUBLIC SECURITIES AND 6% IN ROLLED FORWARD DEBT POSITIONS AS OF 31 JULY 2020.

Message from the Chairman of the Board

The Board and Manager of NB Private Equity Partners Limited (“NBPE”) have long believed that investing responsibly and operating with high standards of conduct are integral to NBPE’s role as a successful private equity investor. We work hard every day to earn and retain the trust of our stakeholders, including NBPE’s shareholders, investor partners, employees, and the community. We are committed to upholding the highest governance standards and are relentlessly focused on constant improvement and open communications with our shareholders.

As a part of this commitment, NBPE has formalised its responsible investment practices and communications as part of its objective to deliver strong risk-adjusted returns:

- **NBPE Upholds Strong Governance Principles** – As a part of NBPE’s commitment to good governance practices, the Board of Directors oversees the execution of NBPE’s investment strategy. NBPE strives for ongoing improvement and transparency, as manifested in this Responsible and Sustainable Investment Statement
- **NBPE’s Manager is a Leader in Responsible and Sustainable Investing** – NBPE’s Manager, Neuberger Berman, is a global leader in Environmental, Social, and Governance (ESG) investing. The Manager has been ESG-integrated in private equity investing since 2007 and was awarded an A+ Top Score in the most recent UN-supported Principles for Responsible Investment (PRI) assessment
- **NBPE is Committed to Responsible Investment** – Centered on NBPE’s objective to deliver better investment outcomes, NBPE has formalised its commitment to responsible investment with the adoption of a Responsible and Sustainable Investment Policy. We believe responsible investing and the incorporation of material environmental, social, and governance considerations can help inform the assessment of overall investment risk and opportunities. NBPE also recognises that climate-related risk considerations are an increasingly important component of portfolio risk management
- **NBPE’s Portfolio is Assessed Through an Additional Sustainability Lens** – As a value-add to its fundamental due diligence, NBPE seeks to assess company sustainability potential as further evidence of a company’s ability to deliver long-term value. The Manager has conducted a sustainability potential assessment of NBPE’s portfolio which determined that 99% of the portfolio does not have significant adverse sustainability potential and 26% of the portfolio¹ is deemed to have an overall positive sustainability potential or have an overall positive benefit to people or the environment

In many ways, the recent COVID-19 pandemic and ensuing economic situation have put a spotlight on sustainability issues, highlighting the importance of good governance and social and environmental considerations as a part of well-run businesses. We endeavour to summarise our approach and consideration of this important topic.

William Maltby
Chairman
Guernsey, August 2020

1. Based on direct investment portfolio fair value as of 31 July 2020; analysis excludes third party funds (which are past their investment period but which may call capital for reserves or follow-ons) and funds that are not deemed ESG integrated by the Manager. In aggregate these exclusions represent approximately 2.7% of fair value.

Overview of NBPE's Corporate Governance

Corporate Governance Overview

The Board of Directors believes in a strong corporate governance framework and believes the board has structured its activities appropriately for an Investment Company

Corporate Governance & Investment Manager Overview

The Board believes in a strong corporate governance framework. The Board has structured its activities to provide oversight and accountability. The Company itself has no employees or operations and instead relies on the resources, infrastructure and employees of NB Private Markets¹ (the “Investment Manager”), subject to board monitoring. The Investment Manager is a subsidiary of Neuberger Berman, a private, 100% independent, employee-owned investment manager. From offices in 34 cities worldwide, the firm manages a range of strategies—including equity, fixed income, quantitative and multi-asset class, private equity and hedge funds—on behalf of institutions, advisors and individual investors globally.

NBPE Board of Directors

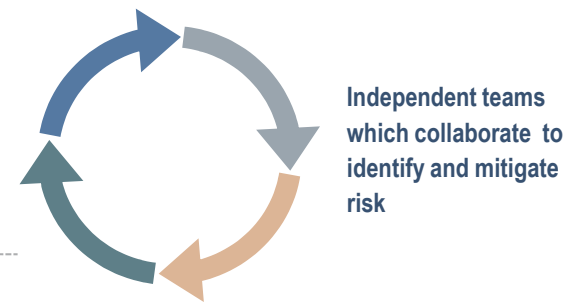


NBPE Board Structure

Board with Majority Independent Directors	Audit Committee
Management Engagement Committee	Nomination and Remuneration Committee

Investment Manager: NB Private Markets

Investment Committee*	Valuation Committee*	Investment Risk Committee	Operational Risk Committee
-----------------------	----------------------	---------------------------	----------------------------



Independent Control Units that Collaborate	<ul style="list-style-type: none"> • Infrastructure Technology • Business Technology • Operations • Finance 	<ul style="list-style-type: none"> • Legal • Compliance • AMGO • Investment Risk • Operational Risk
	Independent Assurance	<ul style="list-style-type: none"> • Internal Audit

1. NB Private Markets is a general description of the business of the Investment Manager, NB Alternatives Advisers LLC; there has been no change to the Investment Manager of NBPE.
* Highlights represent committees of the Investment Manager; other committees presented above are resources of the parent company, Neuberger Berman, of the Investment Manager.

The Board & Sub-Committees

The Board is comprised of a majority of independent directors. The various sub-committees report to the board and are utilised to discuss and evaluate specific company matters

Board of Directors

Independent Directors



William Maltby
Chairman



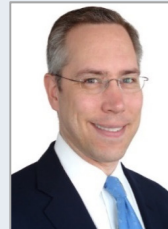
John Falla
Audit Committee
Chairman



Trudi Clark
Management
Engagement &
Nomination /
Remuneration
Chairman



Wilken von Hodenberg
Senior
Independent
Director



Peter von Lehe
Managing
Director,
Neuberger
Berman

The board meets at least four times per year to discuss Company developments, strategy and direction and ongoing activities. The board also meets on an ad-hoc basis other times throughout the year to discuss dividends and other Company matters as necessary

The board has formed three sub-committees to carry out specific company matters. The chairs of the sub-committees report to the board on matters arising

For matters pertaining to risk management and principal risks, the directors consider these as part of the overall board. The board also considers other matters such as professional development, diversity, tenure, performance evaluation and succession as part of the overall board.

Sub-Committees of the Board

<u>Committee</u>	<u>Principal Responsibilities</u>
Audit Committee Meets at least three times per year	<ul style="list-style-type: none"> Reviewing the Company's financial results announcements and consolidated financial statements and monitoring compliance with relevant statutory and listing requirements Reporting to the board on the appropriateness of the Company's accounting policies and practices including critical accounting policies and practices Considering the financial and other implications on the independence of the auditors arising from any non-audit services to be provided by the auditor
Management Engagement Committee Meets at least once per year	<ul style="list-style-type: none"> Principal function Review annually the terms of the Investment Management Agreement between the Company and the Investment Manager Also reviews annually the performance and terms of engagement of key services providers
Nomination and Remuneration Committee Meets at least twice per year	<ul style="list-style-type: none"> Responsible for identifying and nominating, for approval by the board, suitable candidates to fill board vacancies as and when they arise The NRC also puts in place plans for the succession of directors, in particular with respect to the Chairman Agrees with the board policy for the remuneration of the directors Review and consider any additional ad hoc payments in relation to duties undertaken over and above normal business

Board Best Practices – Effective Risk Management

The Board of Directors is responsible for the effective management of risks within the Company

Five Pillars Risk Management

	Investment Risk	Financial Risk	Strategic Risk	Operational Risk	External Risk		
RISK	Investment Decisions Selecting investments to generate the best risk adjusted returns Adverse ESG factors	Performance Achieving underwriting case Meeting long-term return objectives	Valuations Misstatements to net asset value	Financial Strength Liquidity Management Credit facility ZDP liabilities Foreign exchange	Meeting Objectives Share price discount to NAV Meeting business objectives	Operating Platform Key professionals, IT systems, business operations, internal policies and procedures	Legal/Regulatory & Market Market, Economic & Political Environment Reputational Regulatory Emerging risks related to COVID-19 outbreak
	KEY CONTROLS <ul style="list-style-type: none"> Highly experienced manager with deep team and 12 person investment committee Extensive due diligence process ESG-integrated investment process 	<ul style="list-style-type: none"> Thorough investment underwriting and DD Regular board review of manager performance, operations and capabilities 	<ul style="list-style-type: none"> Robust, consistent valuation processes Monthly NAV updates Quarterly valuation review Annual Audit 	<ul style="list-style-type: none"> Review of management reports and financials Monitoring of headroom and financial ratios 	<ul style="list-style-type: none"> Monitoring discount and review market research Strategic investor relations programme 	<ul style="list-style-type: none"> Resources of the Manager for attracting and retaining talent Manager policies Board inquiries and reports on IT systems and IT environments 	<ul style="list-style-type: none"> Awareness of environment Consultation with advisors Manager discussions with GPs to understand COVID-19 impact
	← Oversight is conducted by the Board of Directors →						

The Board is ultimately responsible for the identification and assessment of risk

Board Best Practices – AIC Code of Corporate Governance

NBPE complies with the AIC code of Corporate Governance regarding best practices of corporate governance for investment companies

AIC Code of Corporate Governance

Provides a framework of best practices of governance for Investment Companies

Background

- AIC Code is built around an understanding of what shareholders want or expect to achieve by holding shares in an investment company and the role boards play in meeting those objectives
- Provides guidance on board responsibilities to deliver objectives to shareholders, including board leadership and purpose, division of responsibilities and other criteria
- Fundamentals behind the Code include treating all shareholders fairly and addressing all issues of relevance

NBPE Compliance with the Code

- The Company has complied with the recommendations of the AIC Code and the relevant provisions of the UK Corporate Governance Code, except as set out below.
- The UK Corporate Governance Code includes provisions relating to:
 - The role of the chief executive;
 - Executive directors' remuneration; and
 - The need for an internal audit function.
- The board considered these provisions are not relevant to the position of NBPE, being an externally managed investment company. In particular, all of the Company's day-to-day management and administrative functions have been outsourced to third parties.

NB Private Market's Approach to Responsible and Sustainable Investing

NB Private Markets is a Global Leader in Responsible and Sustainable Investing



100%

Assets are ESG aware across \$90 bn in private markets assets managed¹

A+

Awarded Top Scores

In the most recent UN-backed Principles for Responsible Investment (PRI) assessment report for its overarching approach to ESG strategy and governance and integration across asset classes, including Private Equity²

Focus on Improving Gender Diversity

32% Female – Private Markets Global Business Heads
48% Female – Private Markets New Hires in 2019³

100% of global travel greenhouse gas emissions offset⁴

Supporter of the Taskforce for Climate-related Financial Disclosure (TCFD)⁵

Asset Management Awards 2020 - Private Equity Manager of the Year⁶

Representation on over 180 Limited Partner Advisory Committees⁷

Unique access to proprietary firm resources such as research analysts, data science, and ESG analytics as a multi-asset class manager⁸

1. Neuberger Berman, as of 31 May 2020.

2. PRI grades are based on information reported directly by PRI signatories, of which investment managers totaled 1,119 for 2019, 1,120 for 2018 and 935 for 2017. For full footnote, see appendix.

3. Please Note: Data is as of 31 December 2019 for U.S. employees only. Employees are not legally required to self-identify their race/ethnicity or gender. Accordingly, this information is provided only as an overview of the estimated race/ethnicity and gender makeup of our current employees.

4. Via annual purchase of carbon offsets.

5. www.fsb-tcfid.org. The Financial Stability Board Task Force on Climate-related Financial Disclosures (TCFD) seeks to develop voluntary, consistent climate-related financial risk disclosures.

6. The Asset Management Awards 2020. <https://www.moneyage.co.uk/assetmanagementawards/winners20.php>. The Asset Management Awards' judging is undertaken by a group of judges with expertise across the UK institutional and retail asset management spaces. Each judge reviews submitted entry material and then scores the entries out of a total of score of 10 providing their reasoning as to why they have submitted that score. Two judges analyse each category and the firm with the highest overall score wins that category. Votes are verified by Insurance Asset Management's editorial team. NB Private Equity did not pay a fee to participate. Awards and ratings referenced do not reflect the experiences of any Neuberger Berman client and readers should not view such information as representative of any particular client's experience or assume that they will have a similar investment experience as any previous or existing client. Awards and ratings are not indicative of the past or future performance of any Neuberger Berman product or service.

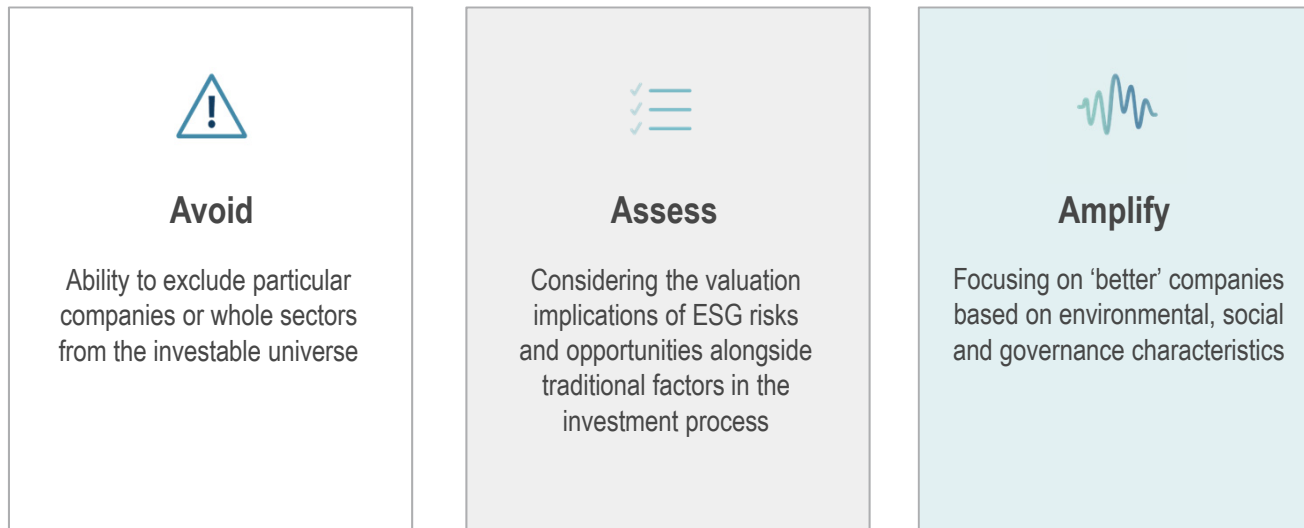
7. As of 31 March 2020. Includes realised and partially realised investments, which are defined as investments with no remaining NAV or a DPI larger than 100% (DPI = distributed capital / paid-in capital)."

8. Neuberger Berman, as of 31 December 2019. Subject to Neuberger Berman's policies and procedures, including certain information barriers within Neuberger Berman that are designed to prevent the misuse by Neuberger Berman and its personnel of material information regarding issuers of securities that has not been publicly disseminated.

ESG Integration Framework

NB Private Markets believes material ESG factors are an important driver of long-term returns, offering potential for both opportunity and risk mitigation

ESG factors integrated into the investment process by:



Note: Investment strategies' ESG integration approaches may evolve over time.

NB Private Markets Seeks to Avoid Companies with Adverse Sustainability Potential

NB Private Markets assesses company sustainability potential and seeks to avoid significant adverse outcomes

- Seek to avoid significantly adverse social and environmental outcomes to people and the planet
 - NB Private Markets seeks to avoid: companies which do not uphold human rights, controversial weapons, tobacco, civilian firearms, private prisons, fossil fuels¹
 - Seek to avoid companies with known controversies related to human rights or serious damage to the environment; including as outlined by the United Nations Global Compact (UNGC) and OECD Guidelines for Multinational Enterprises



Universal principles on human rights, labour, environment and anti-corruption, and to taking actions that advance societal goals



Principles and standards for responsible business conduct in a global context consistent with applicable laws and internationally recognised standards

¹ –See detailed Responsible Investment Policy for definitions of exclusions

NB Private Markets Considers ESG Factors as a Standard Part of the Investment Process

ESG integration helps identify both risks and opportunities to drive value and better investment outcomes

ESG Philosophy

NB Private Markets integrates ESG considerations throughout the investment process which can lead to more consistent and better investment outcomes, by helping to identify both material risks and opportunities to drive value.

NB Private Markets is **focused on long-term partnerships** and engages with partners to promote ESG integration best practices



Oversight and Responsibility

- Deal teams are responsible for ESG analysis and the Investment Committee evaluates ESG considerations as a part of overall investment evaluation
- NB Private Markets leverages the broader firm's ESG capabilities and resources, including: firm ESG policy and climate strategy, proprietary ESG ratings and data analytics



Due Diligence and Selection

- ESG analysis is a part of every investment due diligence and is included in all IC memos
- Direct investments are focused on assessing industry-specific material ESG factors, alongside the ESG integration of the lead GP



Monitoring and Ownership

- Investments are monitored for ESG violations and risks
- NB Private Markets engages with GP partners to share ESG best practices and plays an active leadership role in ESG-related industry collaborations

A+ UN-backed PRI Assessment of ESG Integration Efforts for 2020

Manager Assessment Report

This material is intended as a broad overview of the portfolio managers' style, philosophy and process and is subject to change without notice. ESG ratings for equities and fixed income are the Central Research Analysts' view of the environmental, social and governance characteristics of a company on material factors relative to the peer group. The summary output of the material factors evaluated by the Central Research Analysts are summarised as a proprietary resource available to the firm. ESG ratings developed for public securities are not directly applied to private markets. Subject to Neuberger Berman's policies and procedures, including certain information barriers within Neuberger Berman that are designed to prevent the misuse by Neuberger Berman and its personnel of material information regarding issuers of securities that has not been publicly disseminated.

NB Private Markets' Proprietary 'Materiality Matrix' Enhances ESG Analysis

Apply sector experts' forward-looking views on financially material sustainability factors

	ENVIRONMENTAL		SOCIAL		WORKFORCE		SUPPLY CHAIN		LEADERSHIP AND GOVERNANCE	
FACTOR	Emissions	Water Management	Data Privacy & Security	Pricing Transparency	Health and Safety	Human Capital Development	Product Safety & Integrity	Materials Sourcing	Innovation	Policy & Regulation Risk
Consumer Goods										
Extractives/Minerals										
Financials										
Food & Beverage										
Health Care										
Infrastructure										

Represents a subset of factors for illustrative purposes only.

Legend

Likely to be Material

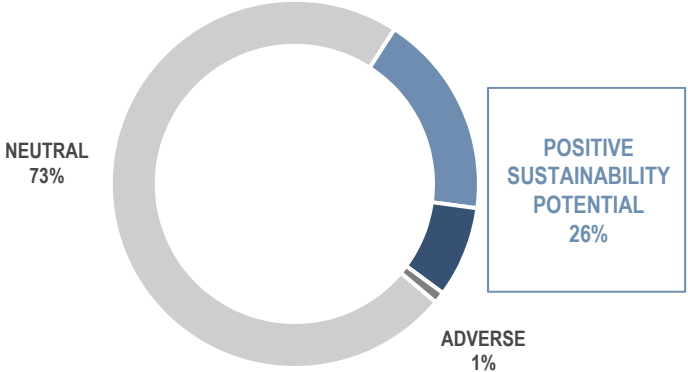
Unlikely to be Material

Source: Neuberger Berman Materiality Matrix, As of May 12, 2020. Materiality Matrix is as of the date indicated and subject to change without notice. For illustrative and discussion purposes only. This material is intended as a broad overview of the portfolio managers' style, philosophy and process and is subject to change without notice. ESG ratings for equities and fixed income are the Central Research Analysts' view of the environmental, social and governance characteristics of a company on material factors relative to the peer group. The summary output of the material factors evaluated by the Central Research Analysts are summarised as a proprietary resource available to the firm. ESG ratings developed for public securities are not directly applied to private markets. Subject to Neuberger Berman's policies and procedures, including certain information barriers within Neuberger Berman that are designed to prevent the misuse by Neuberger Berman and its personnel of material information regarding issuers of securities that has not been publicly disseminated..

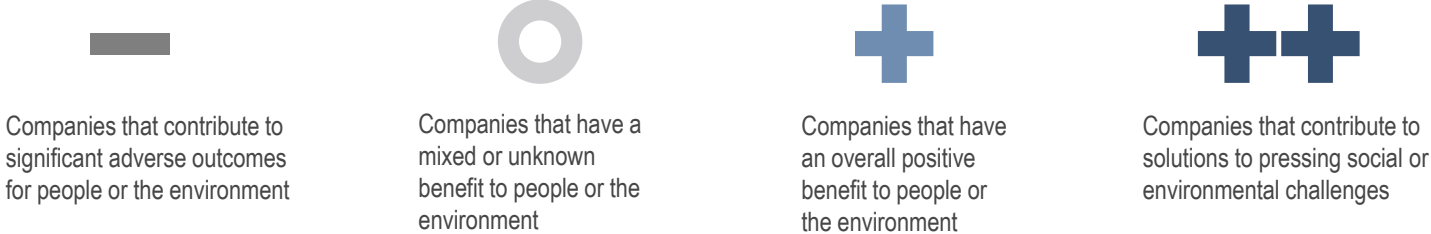
NBPE Portfolio Through a Sustainability Lens

99% of NBPE’s portfolio does not have significant adverse sustainability potential and 26% of the portfolio¹ is deemed to have an overall positive sustainability potential or have an overall positive benefit to people or the environment²

Current NBPE Portfolio by Overall Sustainability Potential



ESG ASSESSMENT BY NB PRIVATE MARKETS



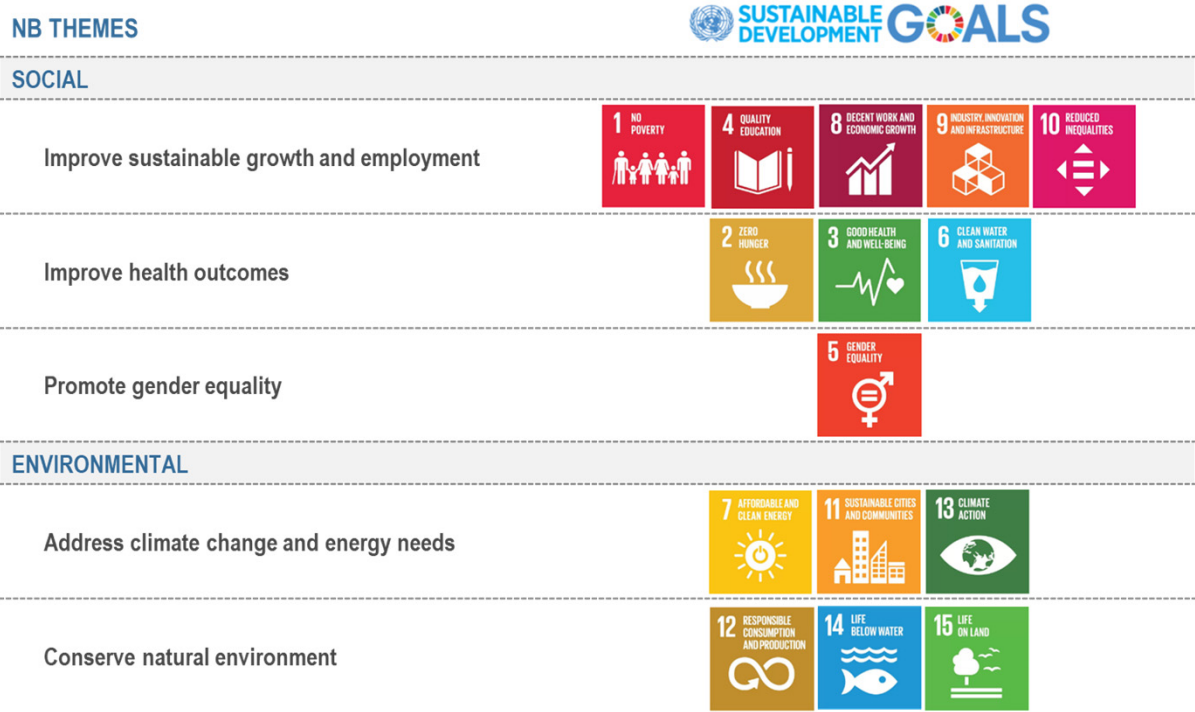
- Example*
- Oil and gas exploration company
 - Consumer retailer
 - Healthcare services
 - Recycling management company

1. Based on direct investment portfolio fair value as of 31 July 2020; analysis excludes third party funds (which are past their investment period but which may call capital for reserves or follow-ons) and funds that are not deemed ESG integrated by the Manager. In aggregate these exclusions represent approximately 2.7% of fair value.
 2. See appendix for a description of sustainability potential.

How NB Private Markets Defines Positive Sustainability Potential

As a value-add to its fundamental due diligence, NB Private Markets seeks to assess company sustainability potential as further evidence of a company’s ability to deliver long-term value

- Although NBPE does not specifically focus on Impact Investing, NB Private Markets believes that Positive Sustainability Potential can be an important driver of returns in its investments. This may not be present in every investment, but is viewed as an investment merit where relevant
- NB Private Markets can identify portfolio companies deemed to have an overall positive potential benefit to people and the environment, including contributing solutions to pressing sustainability challenges¹
- United Nations Sustainable Development Goals (SDGs)² provide a common set of social and environmental outcomes that governments, non-profits, companies and investors can work together to achieve. NB Private Markets applies this common framework combined with other impact dimensions (e.g. depth, scale, and who is affected and relative level of need) to identify sustainability solutions




1 – In addition to fundamental analysis conducted by NBPE Manager. Based on proprietary methodology consistent with industry norms. 2- United Nations. 3- The Impact Management Project.


NBPE Portfolio Company Examples

Portfolio companies deliver a range of positive sustainability potential

Relevant
SDGs




Environmental services at scale
(NYSE: GFL)



12 RESPONSIBLE CONSUMPTION AND PRODUCTION

12.5: Substantially reduce waste generation through prevention, reduction, recycling and reuse; 12.4: Achieve environmentally sound management of chemicals and waste throughout their life cycle, and significantly reduce their release to air, water and soil in order to minimise their adverse impacts on human health and the environment; 11.6: Reduce the adverse per capita environmental impact of cities, including air quality and municipal and other waste management



11 SUSTAINABLE CITIES AND COMMUNITIES

11.6: Reduce the adverse per capita environmental impact of cities, including air quality and municipal and other waste management

- Overall, the Company’s core business contributes to the sound management of chemicals and waste and reduces their release to air, water and soil – though to varying degrees depending on the business segment
- The Company manages recycling and composting facilities, including 11 organic waste processing facilities that help promote a circular economy




A leading hospital in South Vietnam



3 GOOD HEALTH AND WELL-BEING

3.4: By 2030, reduce by one third premature mortality from non-communicable diseases through prevention and treatment and promote mental health and well-being

- Hospital offering diverse range of services – primary care, emergency, oncology, pediatrics, gastroenterology and hepatology, etc. Support services also include laboratory and blood bank, imaging, physiotherapy and rehab.
- First and only Joint Commission International accredited hospital in South Vietnam
- The public healthcare sector overburdened, and hospital offers a private solution to emerging consumers in urban area



Manufacturer of plasmid DNA, a critical raw material input used in gene therapy



3 GOOD HEALTH AND WELL-BEING

3.4: By 2030, reduce by one third premature mortality from non-communicable diseases through prevention and treatment and promote mental health and well-being

- Millions of people globally are living with incurable rare disorders. Gene therapies treat genetic diseases by “repairing” patient genes
- The gene therapy market is highly concentrated in a few therapeutic areas – Hemophilia A, B, and Duchenne Muscular Dystrophy (DMD) accounted for ~54% of the 2019 DNA plasmid market. However, the market for gene therapy is growing rapidly: in 2019, there were 4 approved by the FDA and 1,000+ in development
- The Company has been involved in COVID-19 vaccine development

Note: This material is intended as a broad overview of the portfolio managers’ style, philosophy and investment process and is subject to change without notice.



Appendix – NBPE Exclusions

When implementing NBPE's published investment policy, the Manager will endeavour to not invest in companies which are engaged in or meet any of the following activities or criteria, as defined herein:

Human Rights. The Manager expects corporations to uphold fundamental responsibilities as defined by the United Nations Global Compact (UNGC) in regards to human rights, labour, the environment and anti-corruption. The Manager monitors compliance with the UNGC as a part of our ESG monitoring activities

Sanction-related Exclusions. Neuberger Berman Group LLC ("NBG") and its affiliates are committed to complying with all applicable economic sanctions, including those issued by the United States through the Office of Foreign Assets Control (OFAC), European Union, United Nations Security Council and Her Majesty's Treasury (U.K.). In order to ensure compliance, among other things, Neuberger Berman performs ongoing sanctions screening and restricts transactions with sanctions targets at the firm level.

Controversial Weapons. The Manager is committed to supporting and upholding conventions that seek to ban the production of controversial weapons. As a result, the Manager seeks to avoid investing in companies that the Manager believes are involved in the manufacture of controversial weapons. The Manager defines involvement in the manufacture of controversial weapons as either being responsible for end manufacture and assembly of controversial weapons, or being responsible for the manufacture of intended use components for controversial weapons. The Manager does not include dual-use component manufacturers or delivery platform manufacturers. The Manager defines controversial weapons as:

Biological and chemical weapons. Weapons outlawed by the Biological and Toxin Weapons Convention of 1972 and the Chemical Weapons Convention of 1993.

Anti-personnel mines. Weapons that signatories agreed to prohibit the use, stockpiling, production or transfer of under the 1997 Anti-personnel Landmines Convention.¹ The convention was concluded in Oslo on September 18, 1997 and entered into force on March 1, 1999, six months after it was ratified by 40 states. Today, the treaty is still open for ratification by signatories and for accession by those that did not sign before March 1999. The Convention does not address the issue of financial support for companies that manufacture such weapons.

Cluster munitions. Weapons that signatories agreed to restrict the manufacture, use and stockpiling of, as well as components of these weapons, under the 2008 Convention on Cluster Munitions. The Convention was agreed in Dublin, Ireland on May 30, 2008 and entered into force on August 1, 2010, six months after it was ratified by 30 states. Today, the treaty is still open for ratification by signatories and for accession by those that did not sign before August 2000. The implications for financial support of companies that manufacture cluster munitions is left unclear in the Convention. As a result, signatory states and the institutions based on them have taken a range of approaches to the question of prohibiting or allowing investments in cluster munitions producers: some prohibit all investments, some prohibit only direct investments and some have not yet banned investments.

Depleted uranium weapons. Companies involved in the production of depleted uranium (DU) weapons, ammunition and armor.

Where more than 10% of current or planned revenues are derived from:

Tobacco – the production, distribution, marketing or trade in tobacco or tobacco products.

Civilian Firearms – the production of civilian firearms.

Private Prisons - the ownership, operation, marketing or management of private prisons

Fossil Fuels. The Manager believes a sustainable portfolio minimises or neutralises the exposure to certain pieces of the fossil fuel value chain owing to the varied contribution to climate and environmental risk.

Coal and oil & gas supply. The Manager seeks to avoid investment in coal and oil and gas producers, including thermal coal and oil sands.

Electricity generation. For companies where power generation makes up more than 10% of revenue, the Manager believes a sustainable portfolio should only invest in generation owners that are aligned with a lower carbon emissions economy. The Manager therefore prohibits investment in generators where:

Thermal coal. No more than 30% of current or planned MWh generation derived from thermal coal.

Liquid fuels (oil). No more than 30% of current or planned MWh generation derived from liquid fuels (oil).

Appendix – Sustainability Potential of Investments

Sustainability Potential of Investments. Companies may have a range of effects on employees, the community, and the environment through their operations and products and services. The Manager believes that companies that exhibit leadership in managing material environmental, social, and governance considerations, are also often more resilient, competitively positioned, and exhibit lower risk profiles. Furthermore, companies that contribute positively to solutions addressing sustainability challenges are by their nature, essential. These business models may benefit from macroeconomic and demographic trends while also contributing meaningfully to addressing global social and environmental challenges, such as outlined by the United Nations Sustainable Development Goals (“UN SDGs”). Sustainable companies, by their nature, seek to manage risks, not only related to adverse social outcomes, but also ones that might harm their license to operate.

The Investment Manager defines sustainability potential as:

- Adverse sustainability potential as companies whose operations or products/services contribute to significant adverse outcomes for people or the environment, such as outlined by the United Nations Global Compact (“UNGC”), United Nations Guiding Principles (“UNGP”), and OECD Guidelines for Multinational Enterprises (“OECD Guidelines”);
- Positive sustainability potential as companies that have an overall positive benefit to people or the environment, such as outlined by the UNGC, UNGP, OECD Guidelines for Multinational Enterprises;
- Significantly positive sustainability potential as companies whose products or services offer solutions to long-term sustainability challenges such as outlined by the UN SDGs.

The Investment Manager strives to identify and invest in companies that are deemed to have positive sustainability potential while avoiding exposure to companies that have known ESG-related controversies or business models deemed to have adverse sustainability potential as defined by the Exclusions outlined herein.



Disclaimers

Legal Disclaimer

THIS DOCUMENT, ANY PRESENTATION MADE IN CONJUNCTION WITH THIS DOCUMENT AND ANY ACCOMPANYING MATERIALS (THE "INVESTOR MATERIALS") ARE STRICTLY CONFIDENTIAL AND MAY NOT BE COPIED, DISTRIBUTED, PUBLISHED OR REPRODUCED IN WHOLE OR IN PART, OR DISCLOSED OR DISTRIBUTED BY RECIPIENTS TO ANY OTHER PERSON. ANY RECIPIENT OF THE INVESTOR MATERIALS AGREES TO KEEP PERMANENTLY CONFIDENTIAL ALL INFORMATION THEREIN NOT ALREADY IN THE PUBLIC DOMAIN.

The Investor Materials are not for release, publication or distribution (directly or indirectly) in or into the United States, Canada, Australia, Japan, the Republic of South Africa or to any "US person" as defined in Regulation S under the United States Securities Act of 1933, as amended (the "Securities Act") or into any other jurisdiction where applicable laws prohibit their release, distribution or publication. They do not constitute an offer of securities for sale anywhere in the world, including in or into the United States, Canada, Australia, Japan or the Republic of South Africa. No recipient may distribute, or make available, the Investor Materials (directly or indirectly) to any other person. Recipients of the Investor Materials should inform themselves about and observe any applicable legal requirements in their jurisdictions. In particular, the distribution of the Investor Materials may in certain jurisdictions be restricted by law. Accordingly, recipients represent that they are able to receive the Investor Materials without contravention of any applicable legal or regulatory restrictions in the jurisdiction in which they reside or conduct business.

The Investor Materials have been prepared by NB Private Equity Partners Limited ("NBPE") and NB Alternatives Advisers LLC (the "Investment Manager"). No member of the Neuberger Berman Group nor any of their respective directors, officers, employees, advisors, representatives, or other agents makes or has been authorised to make any representation or warranties (express or implied) in relation to NBPE or as to the truth, accuracy or completeness of the Investor Materials, or any other written or oral statement provided, or any information on which the Investor Materials is based (including, without limitation, information obtained from third parties) or any other information or representations supplied or made in connection with the Investor Materials or as to the reasonableness of any projections which the Investor Materials contain. The aforementioned persons disclaim any and all responsibility and liability whatsoever, whether arising in tort, contract or otherwise, for any errors, omissions or inaccuracies in such information or opinions or for any loss, cost or damage suffered or incurred howsoever arising, directly or indirectly, from any use of the Investor Materials or their contents by the recipient or any other person or otherwise in connection with the Investor Materials. Persons receiving or reviewing the Investor Materials must make all trading and investment decisions in reliance on their own judgement. No statement in the Investor Materials is intended to be nor may be construed as a profit forecast.

In particular, no representation or warranty is given as to the achievement or reasonableness of, and no reliance should be placed on any projections, targets, estimates or forecasts contained in the Investor Materials and nothing in the Investor Materials is or should be relied on as a promise or representation as to the future. The name "Neuberger Berman" is used interchangeably throughout these materials for a number of entities that are part of, or are associated with, the Neuberger Berman Group and when used in this notice includes all such entities.

This Investor Materials do not constitute a prospectus or offering memorandum or an offer in respect of any securities and are not intended to provide the basis for any decision in respect of NBPE or other evaluation of any securities of NBPE or any other entity and should not be considered as a recommendation that any investor should subscribe for or purchase any such securities or engage in any investment activity (as defined in the Financial Services and Markets Act 2000 ("FSMA")) in any jurisdiction nor shall they, or any part of them, or the fact of their distribution in any manner whatsoever form the basis of, or be relied on in connection with, any contract or investment decision whatsoever, in any jurisdiction. Neither the issue of the Investor Materials nor any part of their contents constitutes an offer to sell or invitation to purchase any securities of NBPE or any other entity or any persons holding securities of NBPE and no information set out in the Investor Materials or referred to in other written or oral information is intended to form the basis of any contract of sale, investment decision or any decision to purchase any securities referred to in it.

The information contained in the Investor Materials is given as at the date of its publication (unless otherwise marked) and is subject to updating, revision and amendment. No reliance may be placed for any purpose whatsoever on the information of opinions contained in the Investor Materials or on their completeness, accuracy or fairness. The contents of the Investor Materials have not been approved by any competent regulatory or supervisory authority. The Investor Materials are not intended to be complete or to constitute all of the information necessary to adequately evaluate the consequences of investing in NBPE. The contents of the Investor Materials have not been verified and the Investor Materials have not been approved (in whole or any part) by any competent regulatory or supervisory authority.

The Investor Materials are made available for information purposes only. The Investor Materials, which are not a prospectus or listing particulars or an admission document, do not contain any representations, do not constitute or form part of any offer or invitation to sell or transfer, or to underwrite, subscribe for or acquire, any shares or other securities, and do not constitute or form any part of any solicitation of any such offer or invitation, nor shall they are or any part of them or the fact of their distribution form the basis of or be relied upon in connection with any contract therefore, and do not constitute a recommendation regarding the securities of NBPE.

Neither NBPE nor Neuberger Berman gives any undertaking to provide the recipient with access to any additional information, or to update the Investor Materials or any additional information, or to correct any inaccuracies in them which may become apparent and the distribution of the Investor Materials shall not be deemed to be any form of commitment on the part of NBPE, the Investment Manager or Neuberger Berman to proceed with any transaction.

Legal Disclaimer

THE PROMOTION OF NBPE AND THE DISTRIBUTION OF THE INVESTOR MATERIALS IN THE UNITED KINGDOM IS RESTRICTED BY LAW. ACCORDINGLY, THIS COMMUNICATION IS DIRECTED ONLY AT (I) PERSONS OUTSIDE THE UNITED KINGDOM TO WHOM IT IS LAWFUL TO COMMUNICATE TO, OR (II) PERSONS HAVING PROFESSIONAL EXPERIENCE IN MATTERS RELATING TO INVESTMENTS WHO FALL WITHIN THE DEFINITION OF "INVESTMENT PROFESSIONALS" IN ARTICLE 19(5) OF THE FINANCIAL SERVICES AND MARKETS ACT 2000 (FINANCIAL PROMOTION) ORDER 2005 (AS AMENDED), OR (III) HIGH NET WORTH COMPANIES, UNINCORPORATED ASSOCIATIONS AND PARTNERSHIPS AND TRUSTEES OF HIGH VALUE TRUSTS AS DESCRIBED IN ARTICLE 49(2) OF THE FINANCIAL SERVICES AND MARKETS ACT 2000 (FINANCIAL PROMOTION) ORDER 2005 (AS AMENDED); PROVIDED THAT IN THE CASE OF PERSONS FALLING INTO CATEGORIES (II) OR (III), THE COMMUNICATION IS ONLY DIRECTED AT PERSONS WHO ARE ALSO "QUALIFIED INVESTORS" AS DEFINED IN SECTION 86 OF THE FINANCIAL SERVICES AND MARKETS ACT 2000 (EACH A "RELEVANT PERSON"). ANY INVESTMENT OR INVESTMENT ACTIVITY TO WHICH THIS COMMUNICATION RELATES IS AVAILABLE ONLY TO AND WILL BE ENGAGED IN ONLY WITH SUCH RELEVANT PERSONS. PERSONS WITHIN THE UNITED KINGDOM WHO RECEIVE THIS COMMUNICATION (OTHER THAN PERSONS FALLING WITHIN (II) AND (III) ABOVE) SHOULD NOT RELY ON OR ACT UPON THIS COMMUNICATION. YOU REPRESENT AND AGREE THAT YOU ARE A RELEVANT PERSON.

NBPE HAS NOT BEEN, AND HAS NO INTENTION TO BE, REGISTERED UNDER THE U.S. INVESTMENT COMPANY ACT OF 1940, AS AMENDED (THE "INVESTMENT COMPANY ACT") AND INVESTORS ARE NOT AND WILL NOT BE ENTITLED TO THE BENEFITS OF THAT ACT. THE SECURITIES DESCRIBED IN THIS DOCUMENT HAVE NOT BEEN AND WILL NOT BE REGISTERED UNDER THE SECURITIES ACT OR THE LAWS OF ANY STATE OF THE UNITED STATES. CONSEQUENTLY, SUCH SECURITIES MAY NOT BE OFFERED OR SOLD IN THE UNITED STATES OR TO U.S. PERSONS (AS SUCH TERM IS DEFINED IN REGULATION S UNDER THE SECURITIES ACT) UNLESS SUCH SECURITIES ARE REGISTERED UNDER THE SECURITIES ACT OR AN EXEMPTION FROM THE REGISTRATION REQUIREMENT OF THE SECURITIES ACT IS AVAILABLE. NO PUBLIC OFFERING OF THE SECURITIES IS BEING MADE IN THE UNITED STATES.

PROSPECTIVE INVESTORS SHOULD TAKE NOTE THAT ANY SECURITIES MAY NOT BE ACQUIRED BY INVESTORS USING ASSETS OF ANY RETIREMENT PLAN OR PENSION PLAN THAT IS SUBJECT TO PART 4 OF SUBTITLE B OF TITLE I OF THE UNITED STATES EMPLOYEE RETIREMENT INCOME SECURITY ACT OF 1974, AS AMENDED ("ERISA") OR SECTION 4975 OF THE UNITED STATES INTERNAL REVENUE CODE OF 1986, AS AMENDED (THE "CODE"), ENTITIES WHOSE UNDERLYING ASSETS ARE CONSIDERED TO INCLUDE "PLAN ASSETS" OF ANY SUCH RETIREMENT PLAN OR PENSION PLAN, OR ANY GOVERNMENTAL PLAN, CHURCH PLAN, NON-U.S. PLAN OR OTHER INVESTOR SUBJECT TO ANY STATE, LOCAL, NON-U.S. OR OTHER LAWS OR REGULATIONS SIMILAR TO TITLE I OR ERISA OR SECTION 4975 OF THE CODE OR THAT WOULD HAVE THE EFFECT OF THE REGULATIONS ISSUED BY THE UNITED STATES DEPARTMENT OF LABOR SET FORTH AT 29 CFR SECTION 2510.3-101, AS MODIFIED BY SECTION 3(42) OF ERISA.

THE MERITS OR SUITABILITY OF ANY SECURITIES MUST BE INDEPENDENTLY DETERMINED BY THE RECIPIENT ON THE BASIS OF ITS OWN INVESTIGATION AND EVALUATION OF NBPE, THE INVESTMENT MANAGER, AND NEUBERGER BERMAN. ANY SUCH DETERMINATION SHOULD INVOLVE, AMONG OTHER THINGS, AN ASSESSMENT OF THE LEGAL, TAX, ACCOUNTING, REGULATORY, FINANCIAL, CREDIT AND OTHER RELATED ASPECTS OF THE SECURITIES. RECIPIENTS OF THIS DOCUMENT AND THE PRESENTATION ARE RECOMMENDED TO SEEK THEIR OWN INDEPENDENT LEGAL, TAX, FINANCIAL AND OTHER ADVICE AND SHOULD RELY SOLELY ON THEIR OWN JUDGMENT, REVIEW AND ANALYSIS IN EVALUATING NBPE, THE INVESTMENT MANAGER, AND NEUBERGER BERMAN, AND THEIR BUSINESS AND AFFAIRS.

THIS INVESTOR MATERIALS MAY CONTAIN CERTAIN FORWARD-LOOKING STATEMENTS. FORWARD-LOOKING STATEMENTS RELATE TO EXPECTATIONS, BELIEFS, PROJECTIONS, FUTURE PLANS AND STRATEGIES, ANTICIPATED EVENTS OR TRENDS AND SIMILAR EXPRESSIONS CONCERNING MATTERS THAT ARE NOT HISTORICAL FACTS. IN SOME CASES, FORWARD-LOOKING STATEMENTS CAN BE IDENTIFIED BY TERMS SUCH AS "ANTICIPATE", "BELIEVE", "COULD", "ESTIMATE", "EXPECT", "INTEND", "MAY", "PLAN", "POTENTIAL", "SHOULD", "WILL", AND "WOULD", OR THE NEGATIVE OF THOSE TERMS OR OTHER COMPARABLE TERMINOLOGY. THE FORWARD-LOOKING STATEMENTS ARE BASED ON NBPE'S AND/OR NEUBERGER BERMAN'S BELIEFS, ASSUMPTIONS AND EXPECTATIONS OF FUTURE PERFORMANCE AND MARKET DEVELOPMENTS, TAKING INTO ACCOUNT ALL INFORMATION CURRENTLY AVAILABLE AND ARE INTENDED ONLY TO ILLUSTRATE HYPOTHETICAL RESULTS UNDER THOSE BELIEFS, ASSUMPTIONS AND EXPECTATIONS (NOT ALL OF WHICH WILL BE SPECIFIED HEREIN), NOT ALL RELEVANT EVENTS OR CONDITIONS MAY HAVE BEEN CONSIDERED IN DEVELOPING SUCH BELIEFS, ASSUMPTIONS AND EXPECTATIONS. THESE BELIEFS, ASSUMPTIONS, AND EXPECTATIONS CAN CHANGE AS A RESULT OF MANY POSSIBLE EVENTS OR FACTORS, NOT ALL OF WHICH ARE KNOWN OR ARE WITHIN NBPE'S OR NEUBERGER BERMAN'S CONTROL. IF A CHANGE OCCURS, NBPE'S BUSINESS, FINANCIAL CONDITION, LIQUIDITY AND RESULTS OF OPERATIONS MAY VARY MATERIALLY FROM THOSE EXPRESSED IN FORWARD-LOOKING STATEMENTS. SOME OF THE FACTORS THAT COULD CAUSE ACTUAL RESULTS TO VARY FROM THOSE EXPRESSED IN FORWARD-LOOKING STATEMENTS, INCLUDE, BUT ARE NOT LIMITED TO: THE FACTORS DESCRIBED IN THE INVESTOR MATERIALS; THE RATE AT WHICH NBPE DEPLOYS ITS CAPITAL IN INVESTMENTS AND ACHIEVES EXPECTED RATES OF RETURN; NBPE'S AND THE INVESTMENT MANAGER'S ABILITY TO EXECUTE NBPE'S INVESTMENT STRATEGY, INCLUDING THROUGH THE IDENTIFICATION OF A SUFFICIENT NUMBER OF APPROPRIATE INVESTMENTS; THE CONTINUATION OF THE INVESTMENT MANAGER AS MANAGER OF NBPE'S INVESTMENTS, THE CONTINUED AFFILIATION WITH NEUBERGER BERMAN OF ITS KEY INVESTMENT PROFESSIONALS; NBPE'S FINANCIAL CONDITION AND LIQUIDITY; CHANGES IN THE VALUES OF OR RETURNS ON INVESTMENTS THAT THE NBPE MAKES; CHANGES IN FINANCIAL MARKETS, INTEREST RATES OR INDUSTRY, GENERAL ECONOMIC OR POLITICAL CONDITIONS; AND THE GENERAL VOLATILITY OF THE CAPITAL MARKETS AND THE MARKET PRICE OF NBPE'S SHARES.

BY THEIR NATURE, FORWARD-LOOKING STATEMENTS INVOLVE KNOWN AND UNKNOWN RISKS AND UNCERTAINTIES BECAUSE THEY RELATE TO EVENTS, AND DEPEND ON CIRCUMSTANCES THAT MAY OR MAY NOT OCCUR IN THE FUTURE. FORWARD-LOOKING STATEMENTS ARE NOT GUARANTEES OF FUTURE PERFORMANCE. ANY FORWARD-LOOKING STATEMENTS ARE ONLY MADE AS AT THE DATE OF THE INVESTOR MATERIALS, AND NEITHER NBPE NOR THE INVESTMENT MANAGER ASSUMES ANY OBLIGATION TO UPDATE FORWARD-LOOKING STATEMENTS SET FORTH IN THE INVESTOR MATERIALS WHETHER AS A RESULT OF NEW INFORMATION, FUTURE EVENTS, OR OTHERWISE, EXCEPT AS REQUIRED BY LAW OR OTHER APPLICABLE REGULATION. IN LIGHT OF THESE RISKS, UNCERTAINTIES, AND ASSUMPTIONS, THE EVENTS DESCRIBED BY ANY SUCH FORWARD-LOOKING STATEMENTS MIGHT NOT OCCUR. NBPE QUALIFIES ANY AND ALL OF THEIR FORWARD-LOOKING STATEMENTS BY THESE CAUTIONARY FACTORS. PLEASE KEEP THIS CAUTIONARY NOTE IN MIND WHILE CONSIDERING THE INVESTOR MATERIALS.

Legal Disclaimer

BY ACCEPTING AND READING THIS DOCUMENT AND/OR ATTENDING THE PRESENTATION TO WHICH THIS DOCUMENT RELATES YOU WILL BE DEEMED TO HAVE REPRESENTED, WARRANTED AND UNDERTAKEN FOR THE BENEFIT OF NBPE, THE INVESTMENT MANAGER, NEUBERGER BERMAN AND OTHERS THAT (A) YOU ARE OUTSIDE OF THE UNITED STATES AND ARE AN "INVESTMENT PROFESSIONAL" (AS DEFINED ABOVE), (B) YOU HAVE READ AND AGREE TO COMPLY WITH THE CONTENTS OF THIS NOTICE, YOU WILL KEEP THE INFORMATION IN THE INVESTOR MATERIALS AND DELIVERED DURING ANY PRESENTATION OR CONTAINED IN ANY ACCOMPANYING DOCUMENT AND ALL INFORMATION ABOUT NEUBERGER BERMAN CONFIDENTIAL, AND WILL NOT REPRODUCE OR DISTRIBUTE, IN WHOLE OR IN PART, (DIRECTLY OR INDIRECTLY) ANY SUCH INFORMATION, UNTIL SUCH INFORMATION HAS BEEN MADE PUBLICLY AVAILABLE AND TAKE ALL REASONABLE STEPS TO PRESERVE SUCH CONFIDENTIALITY, AND (C) YOU ARE PERMITTED, IN ACCORDANCE WITH APPLICABLE LAWS, TO RECEIVE SUCH INFORMATION.

NBPE IS ESTABLISHED AS A CLOSED-END INVESTMENT COMPANY DOMICILED IN GUERNSEY. NBPE HAS RECEIVED THE NECESSARY CONSENT OF THE GUERNSEY FINANCIAL SERVICES COMMISSION. PAST PERFORMANCE IS NOT INDICATIVE OF, OR A GUARANTEE OF, FUTURE PERFORMANCE. PROSPECTIVE INVESTORS ARE ADVISED TO SEEK EXPERT LEGAL, FINANCIAL, TAX AND OTHER PROFESSIONAL ADVICE BEFORE MAKING ANY INVESTMENT DECISION. THE VALUE OF INVESTMENTS MAY FLUCTUATE. RESULTS ACHIEVED IN THE PAST NOT INDICATIVE OF, OR A GUARANTEE OF, FUTURE RESULTS. ANY OF OUR OPINIONS EXPRESSED HEREIN ARE OUR CURRENT OPINIONS ONLY AND MAY BE SUBJECT TO CHANGE. STATEMENTS MADE HEREIN ARE AS OF THE DATE OF THIS DOCUMENT AND SHOULD NOT BE RELIED UPON AS OF ANY SUBSEQUENT DATE. PAST PERFORMANCE IS NOT INDICATIVE OF, OR A GUARANTEE OF, FUTURE PERFORMANCE.

THIS DOCUMENT IS ISSUED BY NBPE WHOSE REGISTERED ADDRESS IS AT PO BOX 286 FLOOR 2 TRAFALGAR COURT, LES BANQUES ST. PETER PORT, GUERNSEY GY1 4LY. NB ALTERNATIVES ADVISERS LLC IS A REGISTERED INVESTMENT ADVISER IN THE UNITED STATES. NEUBERGER BERMAN IS A REGISTERED TRADEMARK. ALL RIGHTS RESERVED. ©2020 NB ALTERNATIVES ADVISERS LLC.